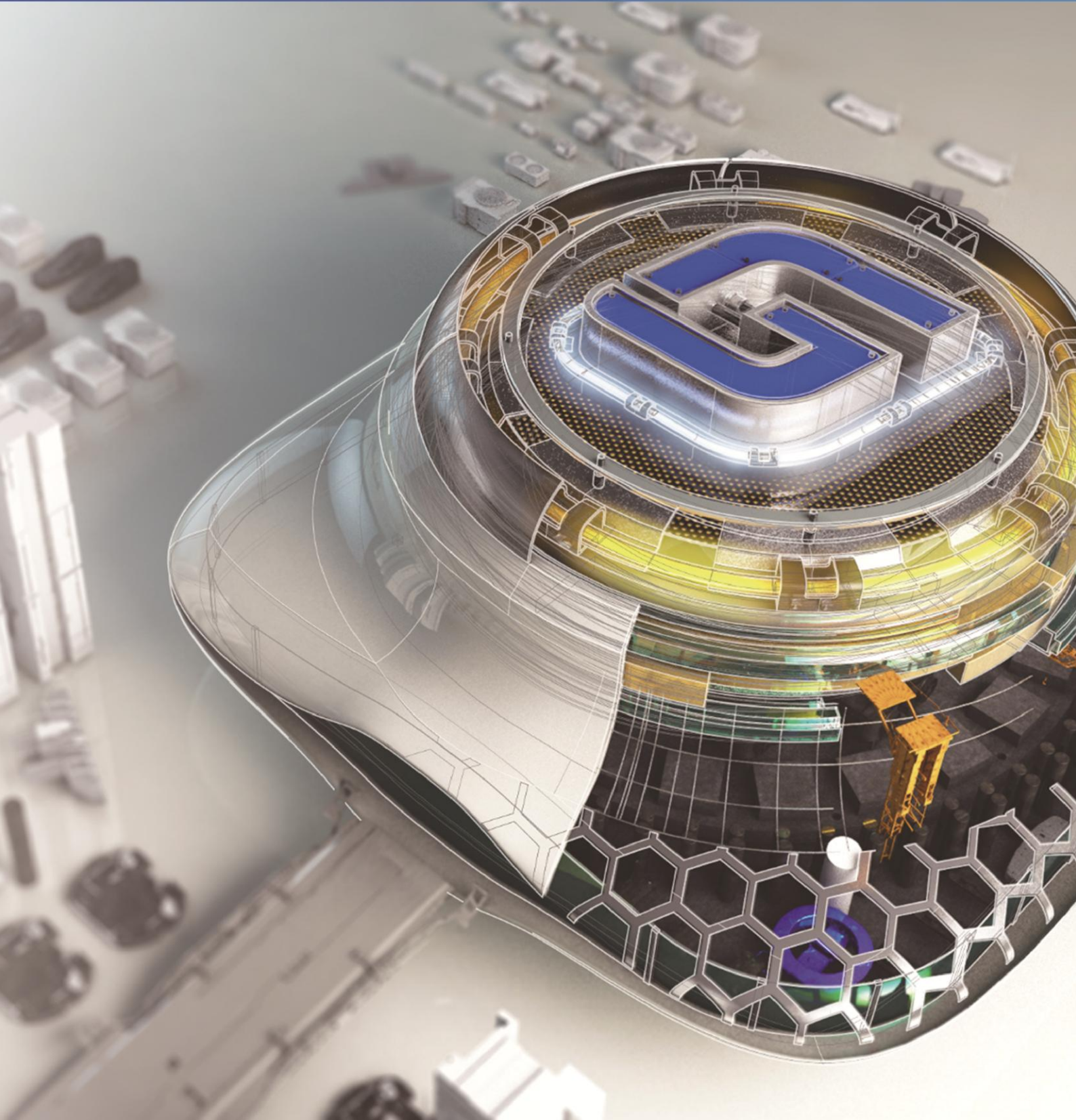




# Overview

GstarCAD 2019



**GstarCAD**



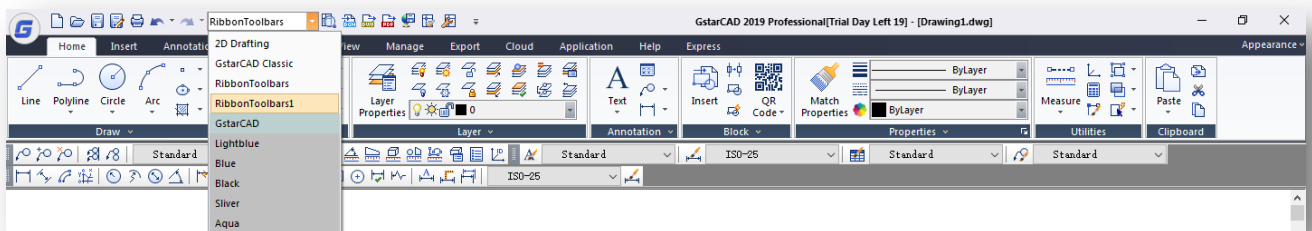
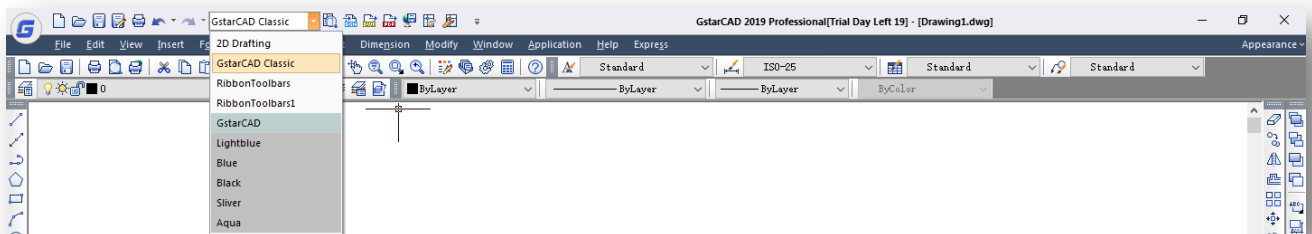
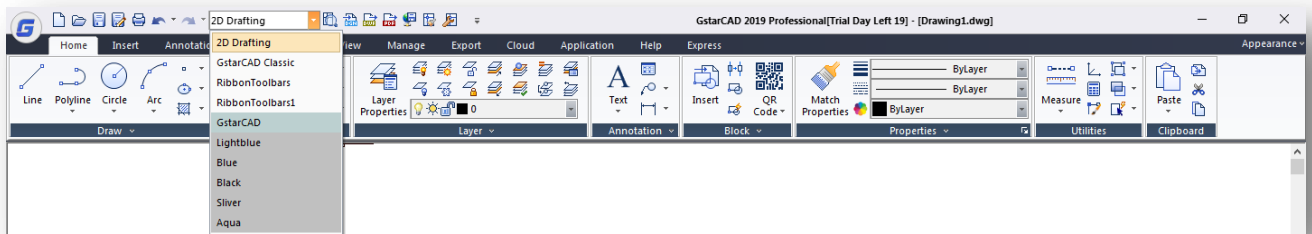
# GstarCAD 2019

## Collaborative Design & BIM Support

GstarCAD 2019 optimized edition comes with new and improved features to shorten different tasks efficiently. In this version users can create, modify, and save workspaces at will, check spelling of a current mtext, flexibility for import layouts to a sheet set file, verify the real scale of viewports created on layout space, redefine inserted blocks from design center and more enhancements available.

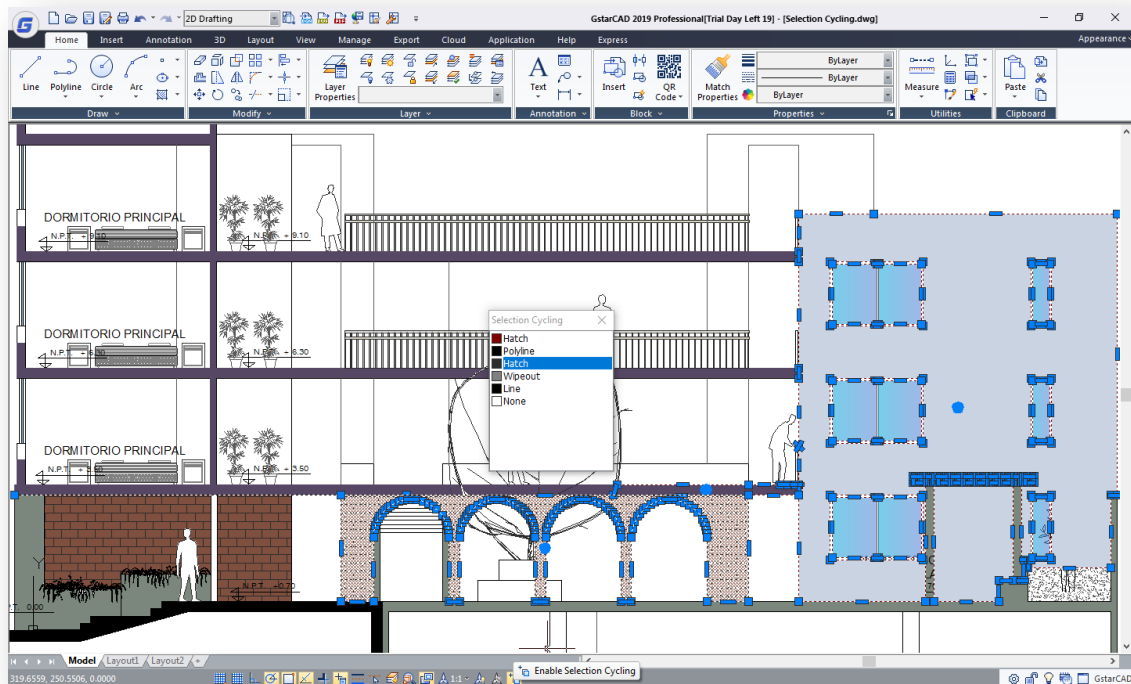
### Workspace

The new WORKSPACE command allows to create, modify and save workspaces current. You can customize ribbon or classic workspace to suit interface environment needs much easier.



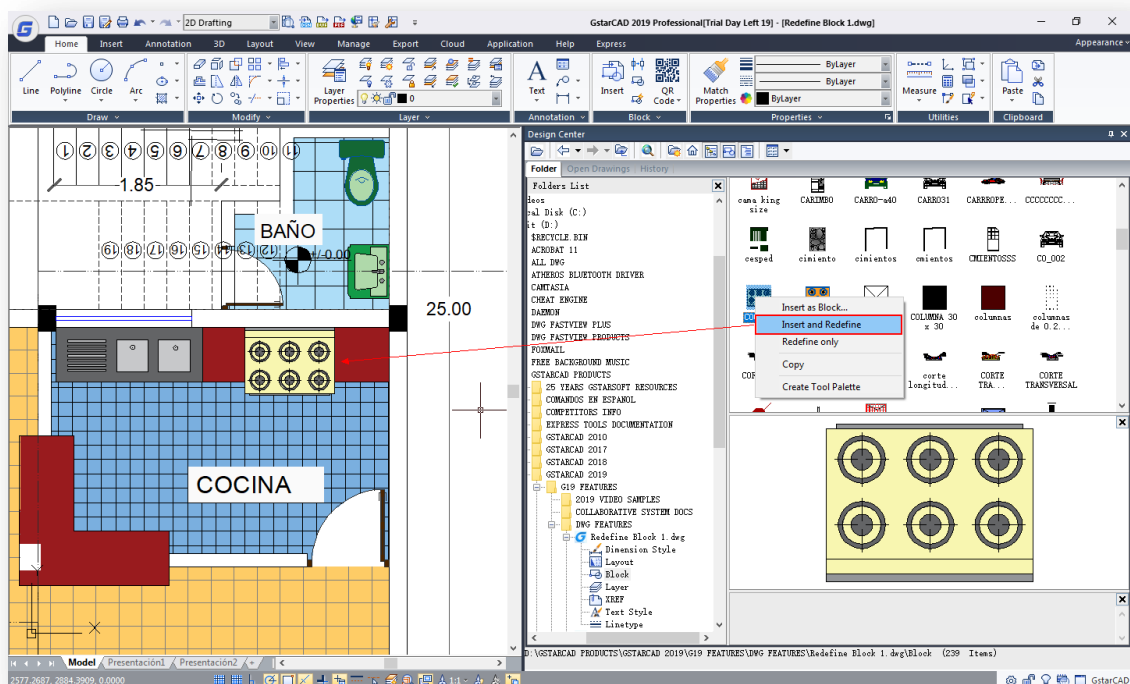
## Selection Cycling

With the new SELECTIONCYCLING system variable you can quickly select overlapped or coincident objects in current drawing as well as set selection cycling options.



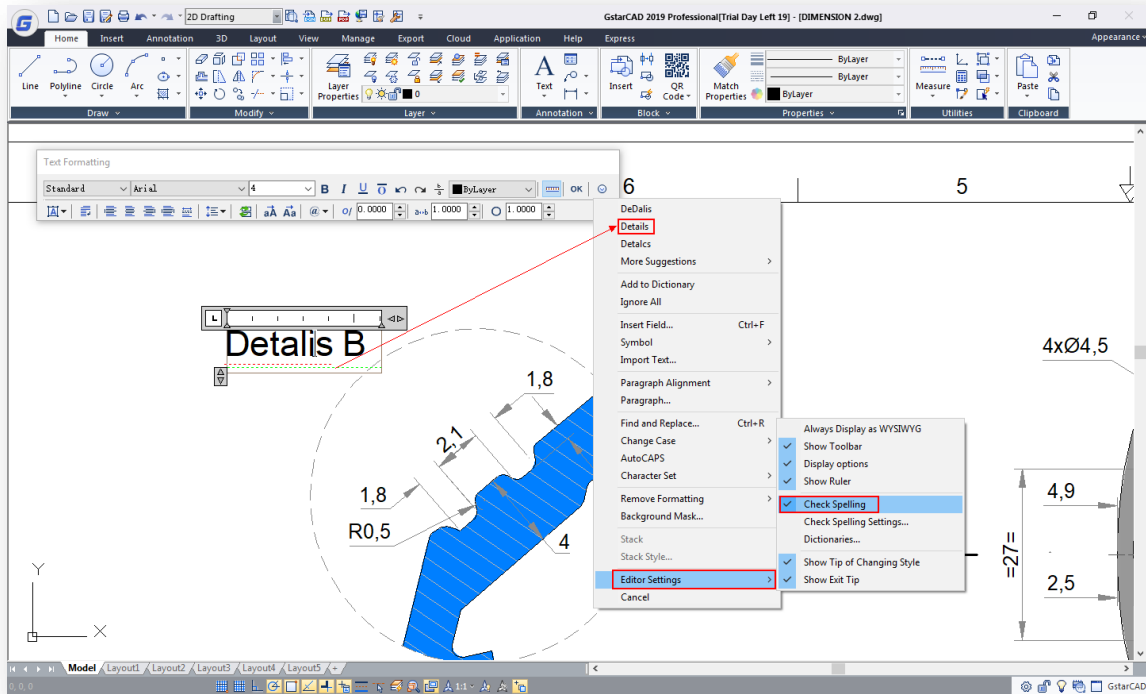
## Redefine Block

Now design center offers a quick way to update instances of block. Redefining a block allows you to overwrite each block instance without changing the block name, all while keeping the original block's position. Alternatively, if you just copy a newer version of a block into your active drawing, the block will not update – it will instead inherit the active drawing's block definition. By redefining a block, there is no need for deleting, purging, and copying.



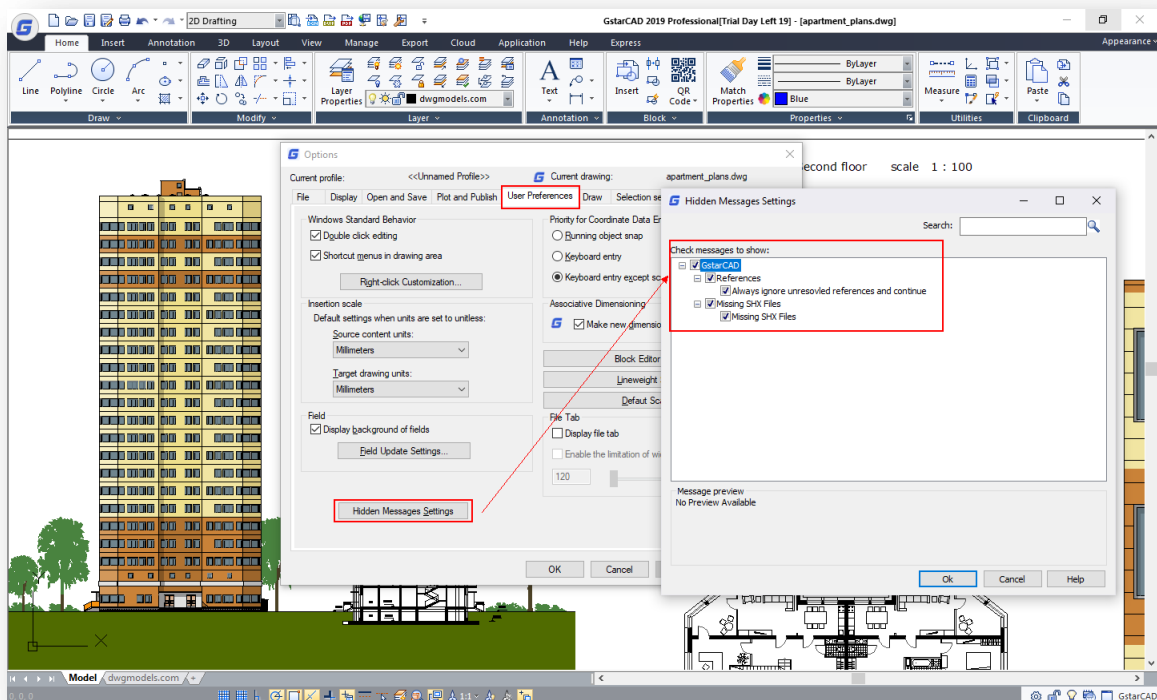
## Check Spelling

Now Mtext supports check spelling that determines whether as you type spell checking is on or off. If you are typing a wrong word it will show a red line under the text. In addition, you can correct a word easily by selecting an alternate word from the Suggestions list or type a word in the Suggestions box.



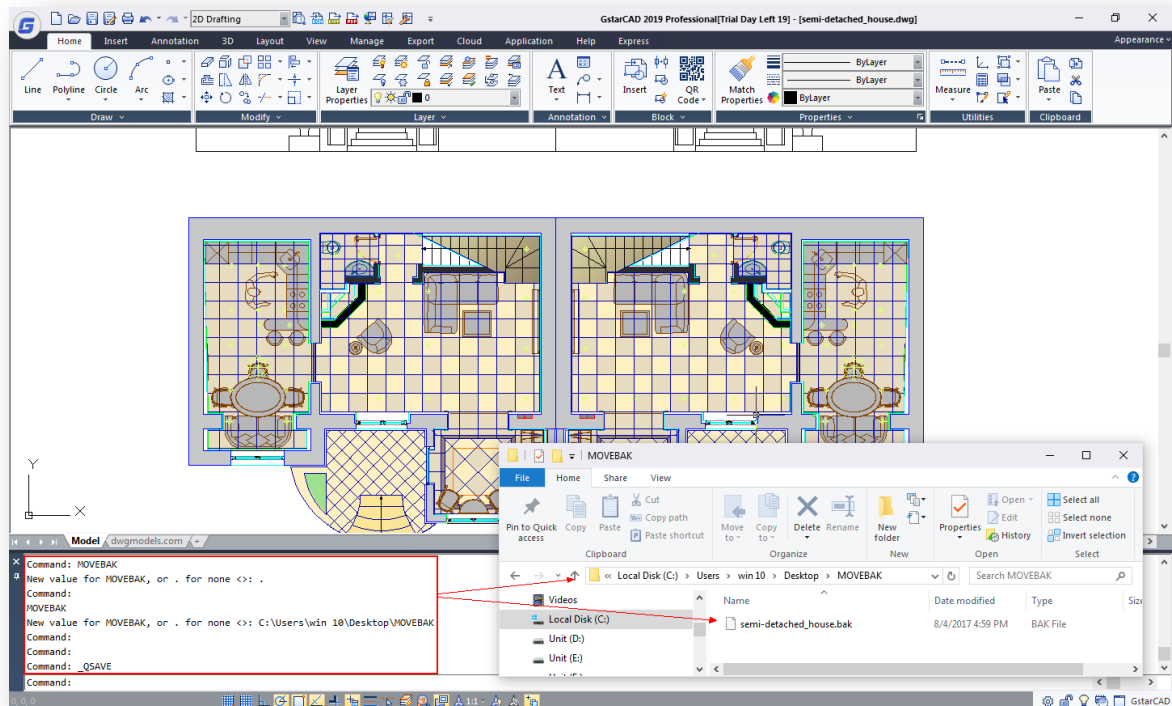
## Hidden Message Settings

Within the option dialog box, under "Users Preferences" tab, you can find the new "Hidden Message Settings" option that controls the display of previously hidden messages. After a message has been hidden, it can be viewed and re-activated.



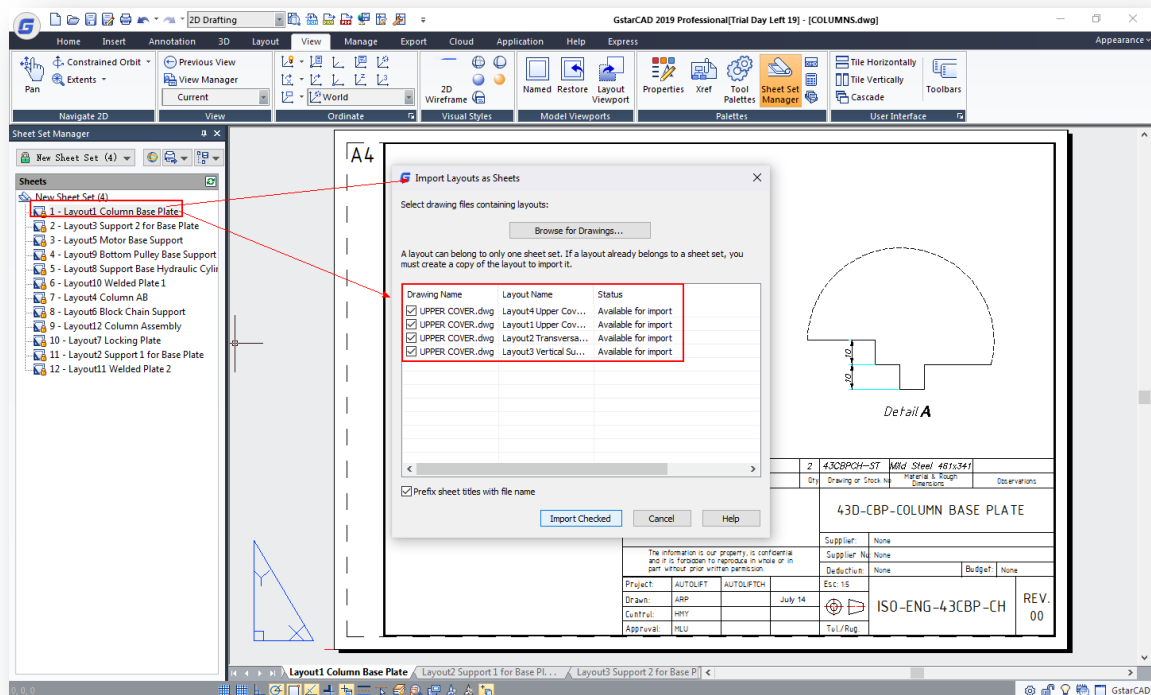
## Movebak

The new MOVEBAK command changes the destination folder for drawing backup (BAK) files. Once you specify a path, the drawing's BAK files is placed in that path after every save operation.



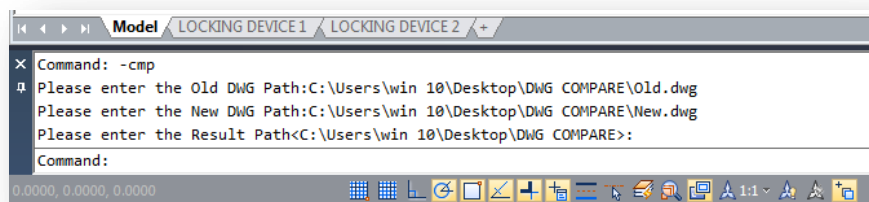
## Import Layout as Sheet

Now you can 'import' additional drawing layouts into your sheet set file using the Sheet Set Manager. When import layouts as sheets you are creating a new pointer to an existing drawing.



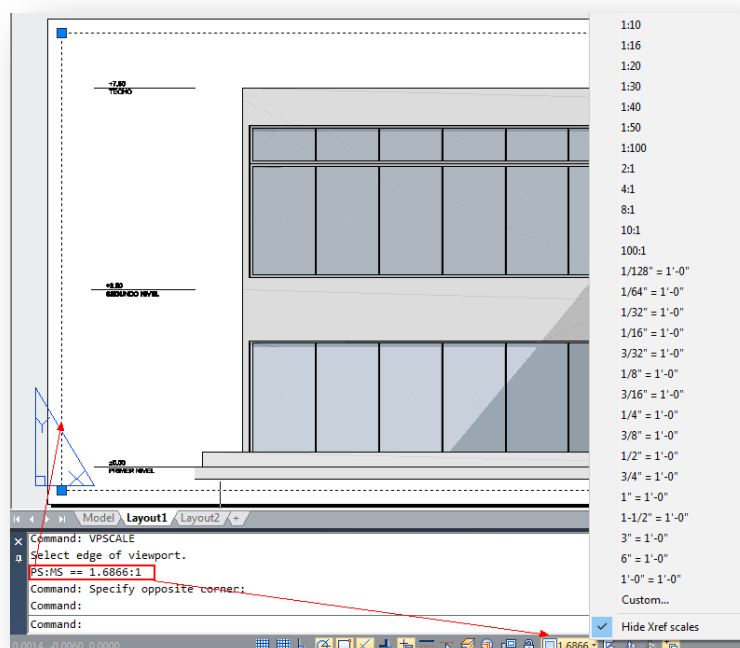
## Drawing Compare Path Input

Now on the command line, after executing the drawing compare command (-CMP), you can input the old, new, and compared drawing file path conveniently.



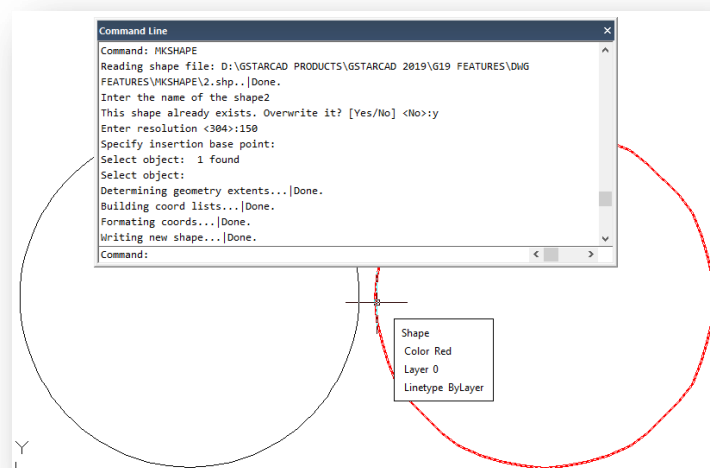
## Viewport Scale

The new VPSCALE command reports the real scale of the current viewport of a selected layout viewport through the command line.



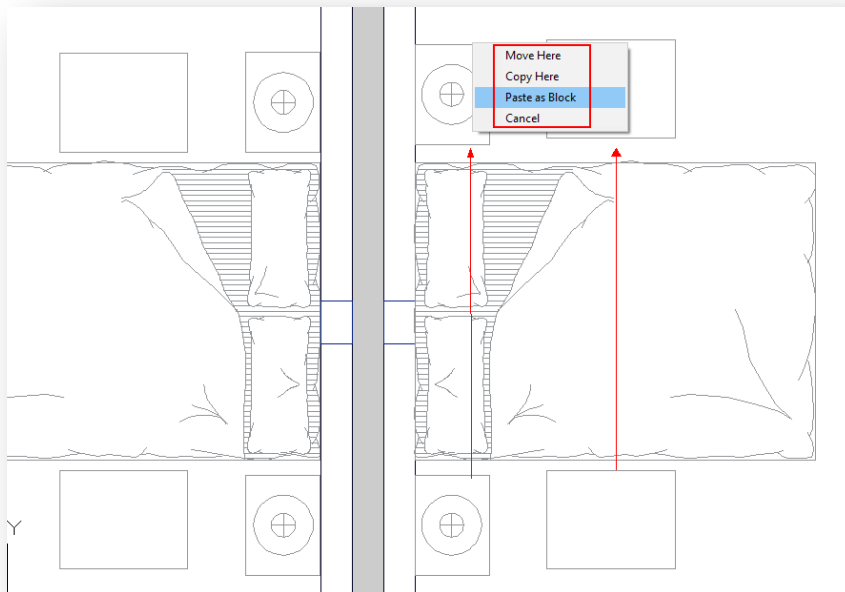
## Make Shape

The new MKSHAPE command creates a shape definition based on selected objects. You can create custom linetypes easily. If you create a shape that exceeds 2200 bytes of data, MKSHAPE creates complex geometry shapes to form a single shape.



## Right-Click + Drag Method

Using the right-click + drag method, you can select an object, then hold down the right mouse button and move to a different location, then release the right mouse button and select from the popup context menu different options like Move, Copy, Paste as Block.



## Hatch Related System Variables

Some hatch related system variables have been implemented;

HPANNOTATIVE

HPISLANDDETECTION

HPMAXAREAS

HPORIGINSTOREASDEFAULT

HPQUICKPREVTIMEOUT

HPLASTPATTERN

HPLAYER

HPLINETYPE

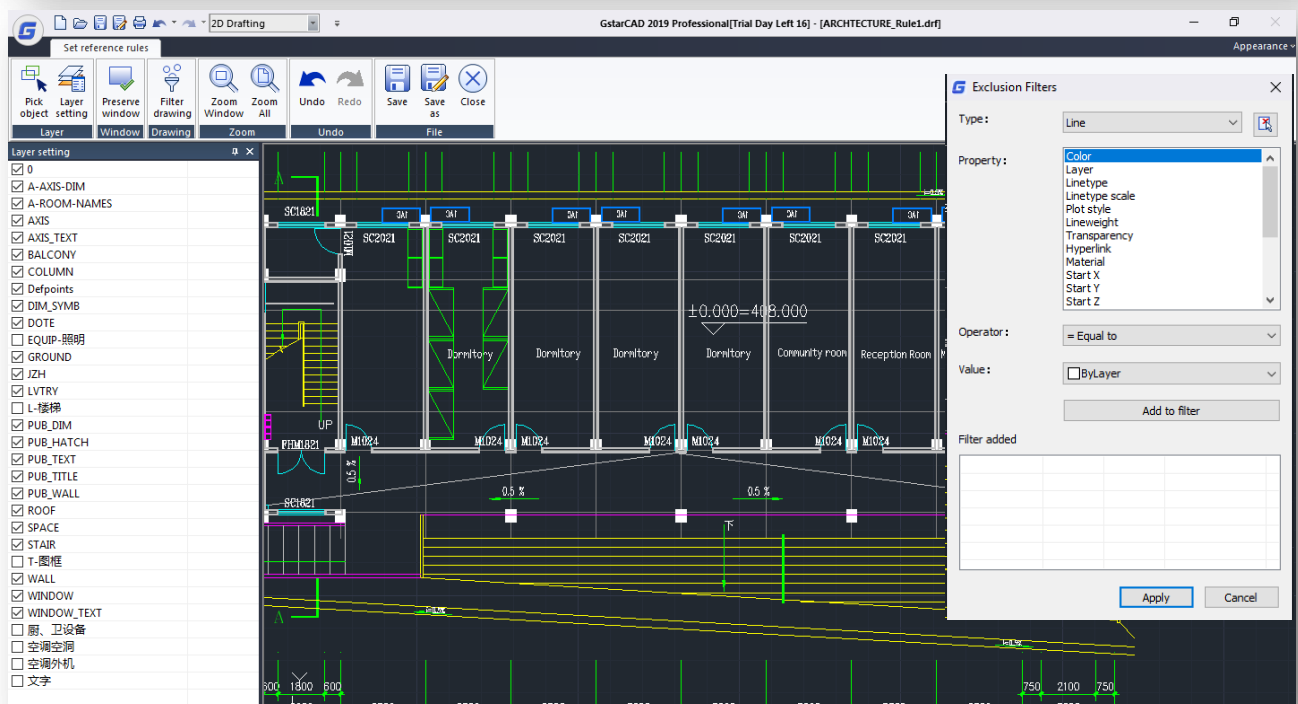
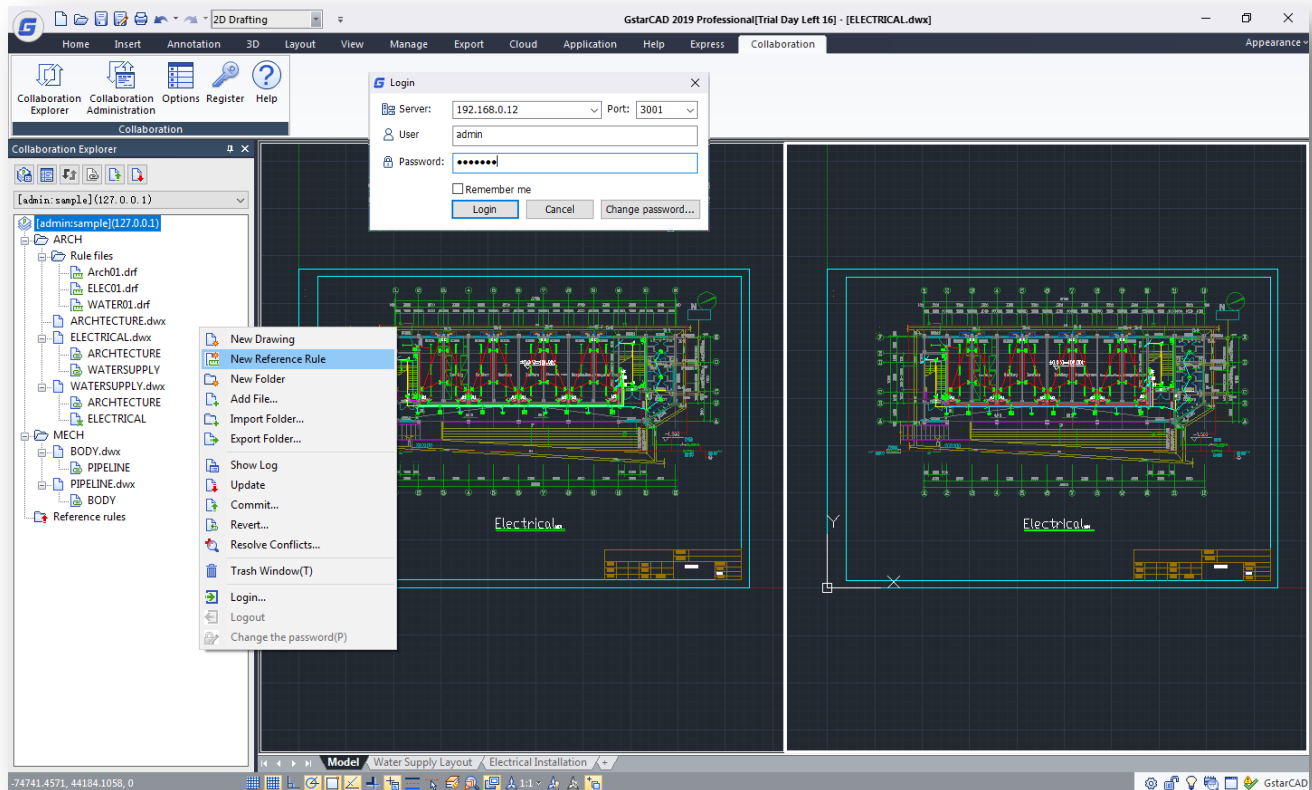
HPICKMODE

HPRELATIVEPS.

# GstarCAD Collaboration Tool

Do you work with large or complex drawings? Is it important for your team to work together on one single referenced drawing file at same time? You can do it now with GstarCAD Collaboration Tool.

GstarCAD Collaboration Tool is an embedded plugin available for GstarCAD platform aimed to help CAD designers work together among a single referenced drawing file at the same time, control drawing revisions and manage medium, big or complex projects with ease and reliability, reducing communication barriers across different industries.



## BIM Support (.IFC File Format Import)

GstarCAD 2019 supports .IFC file format import. IFC (Industry Foundation Classes) is a popular format used in building and construction industry that provides interoperability between different software applications. In GstarCAD 2019 you will have two import options as “Block Definition” with high fidelity data, and import as “AEC Object” that will be supported soon.

